



Electric motors Catalog

Our portfolio begins with electric equipment from the earliest origins of electric propulsion and continues with brand new products adapted to the developing trends in the industry.

RER offers integrated system solutions for electric facilities using AC and DC electric traction motors.

Individual drive concepts are developed for each specific project in order to maximise its efficiency and performance.

Advantages of electric facilities produced by RER:

- ▶ 100% individual solutions
- ▶ Low operating costs
- ▶ High performance

RAILWAY AND SUBWAY CAR MOTORS

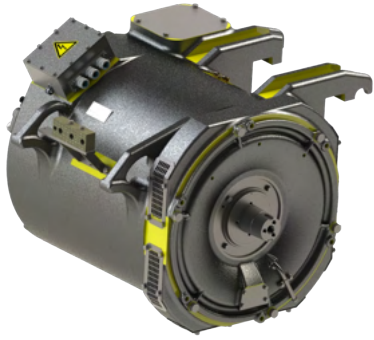


1DT.003.8 (DC)

Nominal power, kW	240
Nominal voltage, V	750
Nominal current, A	350
Revolutions per minute	1240

1DT.003.11 (DC)

Nominal power, kW	220
Nominal voltage, V	825
Nominal current, A	285
Revolutions per minute	870



1DTA.001 U1 (AC)

Nominal power, kW	400
Nominal voltage, V	2200
Nominal current, A	124
Revolutions per minute	1206



1DTA.002.1 U1 (AC)

Nominal power, kW	300
Nominal voltage, V	2340
Nominal current, A	90
Revolutions per minute	2363



1DT.17K U1 (DC)

Nominal power, kW	250
Nominal voltage, V	1500
Nominal current, A	184
Revolutions per minute	780



TAD.350. 1-6 UHL2 (AC)

Nominal power, kW	350
Nominal voltage, V	660
Nominal current, A	377
Revolutions per minute	600



DTA.170 U2 (AC)

Nominal power, kW	170
Nominal voltage, V	530
Nominal current, A	234
Revolutions per minute	1290



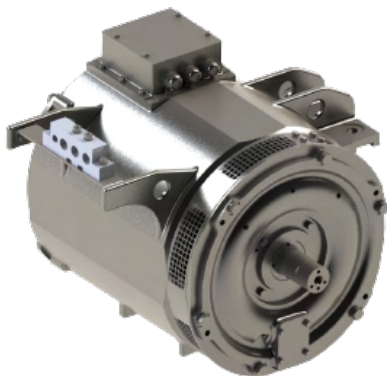
DTA.380 U1 (AC)

Nominal power, kW	380
Nominal voltage, V	2200
Nominal current, A	121
Revolutions per minute	2036



1MRB.001 U1

Gear ratio	6,59
Maximum torque, Nm	2702
Max. input shaft speed, RPM	4774
Max. speed of rolling stock, km/h	120



5DTA.001 U1 (AC)

Nominal power, kW	180
Nominal voltage, V	530
Nominal current, A	242
Revolutions per minute	1480

ADVANCED URBAN MOBILITY IN THE BUSINESS

Our range of systems and components improves all aspects of performance, from order lead time to high availability and low costs.

TROLLEYBUS AND ELECTRIC BUS MOTORS

Solutions are designed individually to meet the technical requirements of a specific customer, resulting in the introduction of eco-friendly trouble-free and cost-efficient transport

6DTA.002.2 U2 (AC)

Nominal power, kW	180
Nominal voltage, V	370
Nominal current, A	343
Revolutions per minute	1477

6DTA.002.1 U2 (AC)

Nominal power, kW	180
Nominal voltage, V	420
Nominal current, A	310
Revolutions per minute	1470

By cooperating with **RER**, a customer has access to a wealth of experience in the electric traction industry, along with excellent professional service.



Three-phase asynchronous motor of 6DTA.002.1 U2 type intended for trolleybus and electric bus setting into motion.



6DTA.001 U2 (AC)

Nominal power, kW	125
Nominal voltage, V	370
Nominal current, A	241
Revolutions per minute	1474

GENERATORS



7GST.002 UXL2 (AC)

Nominal power, kW	750
Nominal voltage, V	750
Nominal current, A	2 x 305
Revolutions per minute	1900



2GV.13 U1 (AC)

Nominal power, kW	32
Nominal voltage, V	116
Nominal current, A	170
Revolutions per minute	950-3400

Our customers' goals and objectives are our top priority.

RER exerts its efforts to manufacture reliable high-quality products to meet any needs and expectations.

We strive to maintain long-term relations with our customers, supporting their business on the way to success.

JSC «RER»

**Ganibu dambis 31, Riga,
LV-1005, Latvia**

Phone +371 67 381 193

Fax +371 67 046 959

WWW.RER.LV

e-mail: office@rer.lv

